



My Favorite Shelley: Nantgarw Style

By Carolyn Keating
NSCC Conference 2020



What should we call these patterns?



- Curt Leiser called them “Elegants”
- Shelley called some of them Patches and Panels





13776 ELEGANT c. 1954



**ELEGANT and
ELEGANCE**



14090 ELEGANCE c. 1961

Nantgarw Porcelain Factory
1813-1820





Nantgarw Porcelain

Nantgarw style Shelley



Shelley bowl and cakeplate
on display in Shelley showroom

Photographs by Chris Davenport

Eric Slater holding the bowl in a
movie by Shelley Pottery



Nantgarw Porcelain



Mackintosh Dessert Service
Seen in *Nantgarw Porcelain* by W.D. John

More Nantgarw Style Porcelain



Nantgarw style porcelain

- Handpainted by Shelley artist A. Taylor on Ely shape
- Previously displayed in Shelley showroom
- Now in home of Eric Slater's daughter

Photograph by Chris Davenport



Nantgarw porcelain

Illustrated in book by W.D. John

More Nantgarw style porcelain owned by Eric Slater



Tea set handpainted by A. Taylor for Eric Slater, displayed in Shelley showroom before residing in Slater's home

Photograph by Chris Davenport



Duke of Cambridge Tea Service
From book *Nantgarw Porcelain* by W.D. John

Wileman patterns

Introduced 1902-1909



PN 7442

Dresden Flower



PN 7903



PN 8141



PN 7914



PN 7919

New Discovery



- Gainsborough shape
- Introduced January 1902
- Companion patterns 7321 Peacock Green, 7323 Meadow Green, 7324 Hard Kiln Pink with yellow roses
- Same as 7238 which comes in Blue, Hard Kiln Yellow, Green and Pink
- Two more series to collect!

Wileman PN 7322

Wileman PN 7751

From Bob Beatty's collection



- On Royal shape
- C. 1904
- Also in Mignonette Green as 7689

Wileman and Early Shelley Patterns with Fishscales



7881 on Gainsborough c. 1906



7895 on Doric c. 1906



10669 on Bute c. 1914

Some Nantgarw Porcelain had fish scales, as did Sèvres



Nantgarw plate painted by
Thomas Pardoe



Sèvres porcelain

Old Sèvres

PN 10678



Registered Aug. 5, 1915
As Rd. 648812



11335 c. 1924



11335 featured patches of color that included:

- /1 Blush pink
- /4 Apple green
- /29 Wedgwood blue
- /31 Orange (looks like yellow)
- /36 Malachite green
- /41 Hard kiln maroon

A border of scrolls and grapes
Floral litho in center

11336



Gold is hand-painted

11337

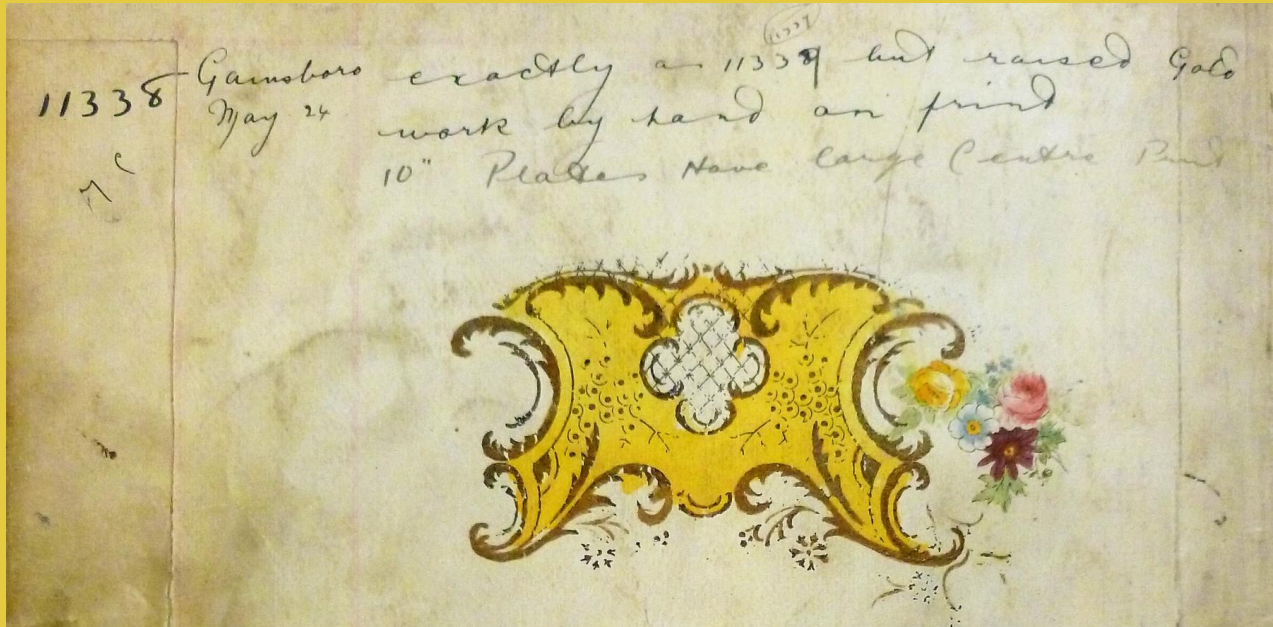


Four colors found so far

11337/31 coffee set



11338



Introduced May 1924

Exactly as 11337 but with raised gold
I have not seen any example on the ware

12920



Introduced c. 1938

"As 11337"

Service plates and on Mocha shape

11550 c. 1927



The border on 11550 reminiscent of this plate
from the Shelley showroom

Nantgarw Style Shelley from the Art Deco Period



12752 c. 1938



Plate PN 12930
Mocha Cup & Saucer PN 12961
Both c. 1938

13146

- Produced c. 1940
- Ray Reynolds said this plate took at least 5 firings
- I have two of these plates, thanks to Kay Hinderliter
- Pattern book says it was made in the Gainsborough shape and service plates
- I'm still looking for a cup and saucer



13192 c. 1940

Background color is /64 pale green

Part of a dessert set; I have never seen any other pieces

The lattice work will appear in later Shelley patterns also



13185 also from 1940



/40 Hard kiln pink as
spokes of a wheel

Sheraton



- PN 13289-91 with traced handle and footline
- PN 13364-13366 with solid gold handle and foot
- The *Sheraton* litho was put onto numerous other patterns
- Made in Gainsborough, Ripon and Mocha shapes
- Complete dinner services and tea sets



Sheraton litho

An advertisement for Shelley Sheraton pottery. It features a large, ornate floral patterned plate with a gold handle and footline, and a teacup and saucer with a similar pattern. The background is red. The text "SHERATON" is in a red box, and "Shelley ENGLISH FINE BONE CHINA" is below it. The bottom section lists agents in Canada, Australia, New Zealand, South Africa, India, and the U.S.A. The text "POTTERY GAZETTE AND GLASS TRADE REVIEW, MARCH, 1950" is at the bottom left, and "311" is at the bottom right.

SHERATON
Shelley
ENGLISH FINE BONE
CHINA

SHELLEY POTTERIES LTD · LONGTON · STOKE-ON-TRENT
Agents.—CANADA : Mr. G. T. James, 7, Wellington Street West, Toronto. AUSTRALIA : Messrs. T. W. Heath Agencies (Pty.) Ltd.,
232, Clarence Street, Sydney, N.S.W. and Commerce House, Flinders Street, Melbourne. NEW ZEALAND : Manufacturers'
Agencies (N.Z.) Ltd., 34, Fort Street, Auckland, C.I. SOUTH AFRICA : Mr. R. L. Hutton, Walter Wise's Buildings, Joubert Street,
Johannesburg. INDIA : Mr. F. H. Jefferys, c/o National Bank of India, Ltd., Calcutta. U.S.A. (New York Importers) : The
Edward Walker Company, 225, Fifth Avenue, New York 10, N.Y.

POTTERY GAZETTE AND GLASS TRADE REVIEW, MARCH, 1950

311

Shelley *Sheraton* Ad, 1950

Sheraton Tea for One Set

PN 13289



Crochet



- 13302 in white with traced gold handle
- Also made in Mocha, Perth and Henley



Crochet litho



- 13371 in S3 Green, S9 Pink, S10 Blue, S14 Puce, S15 Peach, S16 Orange
- Gainsborough shape with solid gold handles
- *Crochet* was also made in Ripon and Mocha shapes and dessert plates



Georgian

- 13360-13361 with traced gold handle & footline
- 13362-13363 with solid gold handle and foot
- *Georgian* was made in Gainsborough, Ripon, Richmond and Mocha shapes



The *Georgian* litho has been put onto innumerable Shelley patterns



Georgian

Shelley
ENGLISH FINE BONE
CHINA

SHELLEY POTTERIES LTD · LONGTON · STOKE-ON-TRENT

Agents—CANADA: Mr. G. T. James, 7, Wellington Street West, Toronto. AUSTRALIA: Messrs. T. W. Heath Agencies (Pty.) Ltd., 232, Clarence Street, Sydney, N.S.W. and Commerce House, Flinders Street, Melbourne. NEW ZEALAND: Manufacturers' Agencies (N.Z.) Ltd., 34, Fort Street, Auckland, C.I. SOUTH AFRICA: Mr. R. L. Hutter, Walter Wise's Buildings, Joubert Street, Johannesburg. INDIA: Mr. F. H. Jefferys, c/o National Bank of India, Ltd., Calcutta. U.S.A. (New York Importers): The Edward Walker Company, 225, Fifth Avenue, New York 10, N.Y.

Shelley Georgian Ad in Pottery and Glass Trade Review, 1949





- 13390 Maroon, 13391 Green, 13392 Blue with solid gold handle and foot
- PN 13387-13389 have gold traced handle and footline
- *Regal* was made on the Gainsborough, Mocha and Chester shapes

Regal

PN 13387-13392



The *Regal* litho was put onto many other patterns

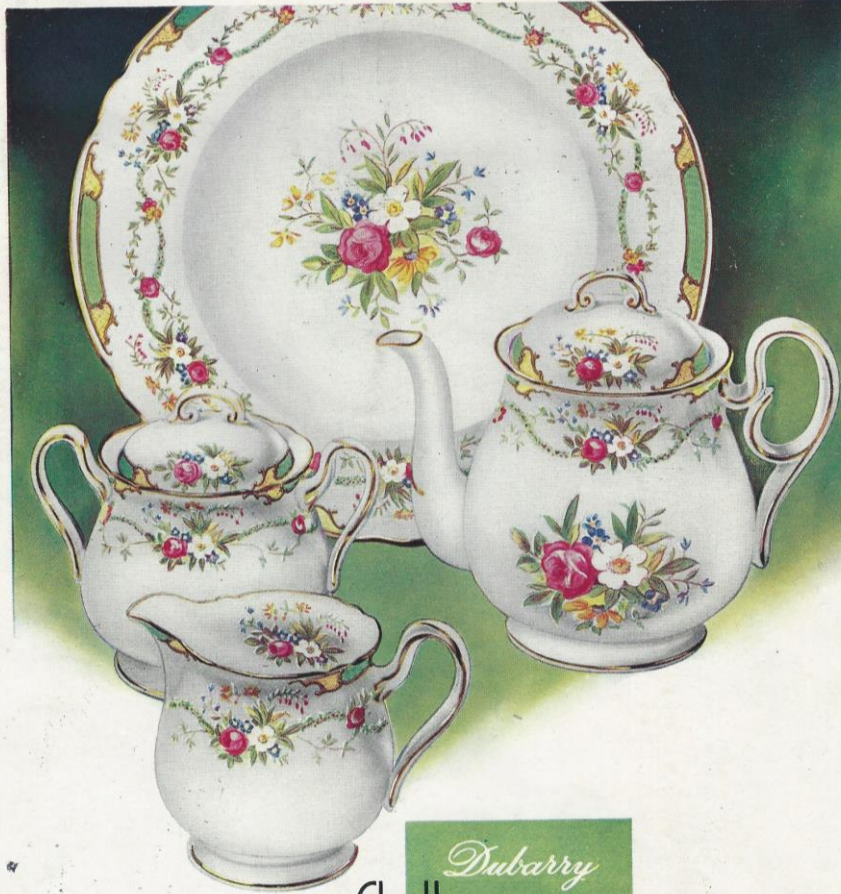
Dubarry



- 13395-13397 with traced gold handle and footline
- 13398-13400 solid gold handle and foot
- Made in Gainsborough, Chester, Henley, Cambridge, Ripon and Mocha shapes
- Complete dinner sets
- *Dubarry* litho used in many other patterns



Dubarry center litho



Dubarry

Shelley
ENGLISH FINE BONE
CHINA

SHELLEY POTTERIES LTD · LONGTON · STOKE-ON-TRENT

Agents.—CANADA: Mr. G. T. James, 7, Wellington Street West, Toronto. AUSTRALIA: Messrs. T. W. Heath Agencies (Pty.) Ltd., 232, Clarence Street, Sydney, N.S.W. and Commerce House, Flinders Street, Melbourne. NEW ZEALAND: Manufacturers' Agencies (N.Z.) Ltd., 34, Fort Street, Auckland, C.I. SOUTH AFRICA: Mr. R. L. Hutty, Walter Wise's Buildings, Joubert Street, Johannesburg. INDIA: Mr. F. H. Jefferys, c/o National Bank of India, Ltd., Calcutta. U.S.A. (New York Importers): The Edward Walker Company, 225, Fifth Avenue, New York 10, N.Y.

Printed by Raithby, Lawrence & Co., Ltd., De Montfort Press, Slater Street, Leicester, and Published by the Proprietors The Stratford Press, Limited, 17 Stratford Place, London, W.1, England.

One of my favorite *Dubarry* designs



13604 partial dessert set

Shelley ad for *Dubarry*, 1950

Duchess



- 13401-13403 with traced gold handle and footline
- 13404-13406 with solid handle and foot
- *Duchess* litho used on many other patterns



Duchess Mocha shapes PN 13401-13403



Duchess center litho

Duchess

Shelley
ENGLISH FINE BONE
CHINA

SHELLEY POTTERIES LTD · LONGTON · STOKE-ON-TRENT

Agents.—CANADA: Mr. G. T. James, 7 Wellington Street West, Toronto. AUSTRALIA: Messrs. T. W. Heath Agencies (Pty.) Ltd., 232, Clarence Street, Sydney, N.S.W. and Commerce House, Flinders Street, Melbourne. NEW ZEALAND: Manufacturers' Agencies (N.Z.) Ltd., 34, Fort Street, Auckland, C.I. SOUTH AFRICA: Mr. R. L. Hutton, Walter Wise's Buildings, Joubert Street, Johannesburg. INDIA: Mr. F. H. Jefferys, c/o National Bank of India, Ltd., Calcutta. U.S.A. (New York Importers): The Edward Walker Company, 225, Fifth Avenue, New York 10, N.Y.

Aubusson



Aubusson rug



Shelley's *Aubusson* 0623/42
Chantilly floral litho

Aubusson in Four Colors



/42 Underglaze Blue, /4 Apple Green, /41 Hard Kiln Maroon, /40 Hard Kiln Pink

13498 *Patches and Georgian*

Comes in 6 colors:

/2 Fawn

/4 Apple green

/39 Green (looks like teal)

/40 Hard kiln pink

/41 Hard kiln maroon

/42 Underglaze blue



- Made in Gainsborough and Mocha shapes
- Note the latticework in the patches
- Solid gold handle and foot



13498/41 Coffee Set

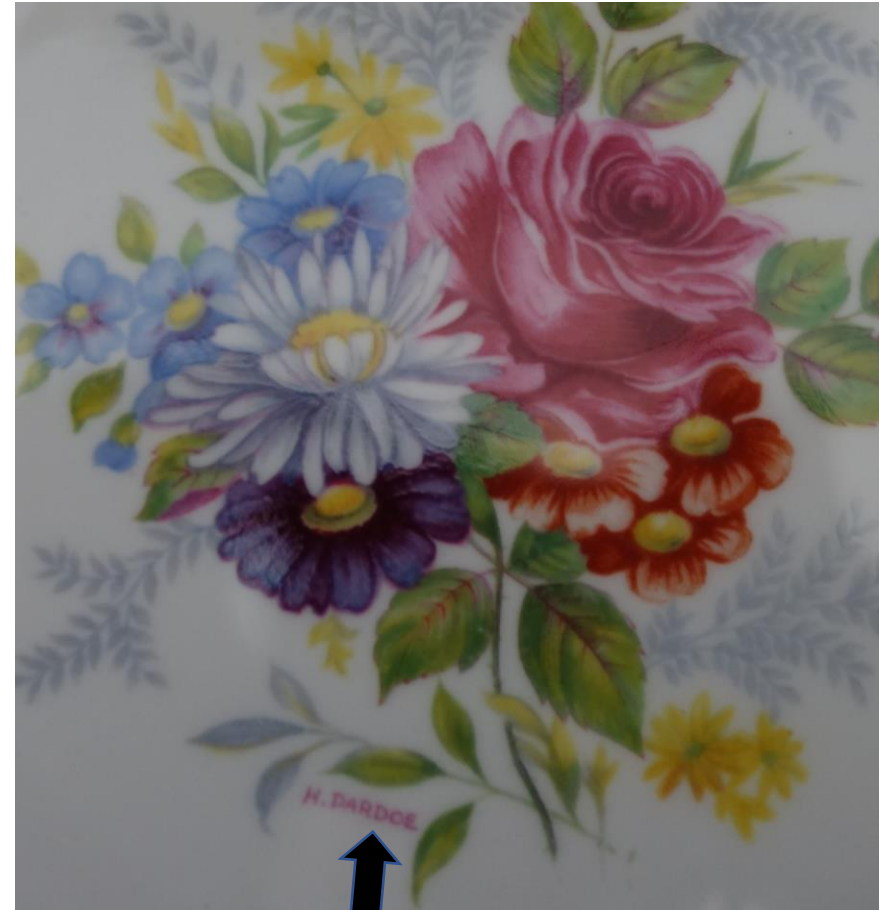
Coffee pot, creamer, sugar and
cake plate in the Court shape

Mocha shape cups and saucers

13498 cake plate



Closeup of center litho



Note pseudo signature of
H. Pardoe

13498/4 Dessert Set



13490 Patches and Georgian



/41 Hard kiln maroon



/4 Apple green



/40 Hard kiln pink

- Ripon shape only
- Uses Georgian litho
- Here are 5 colors
- Is there a sixth color as we saw with PN 13498?
- Blue and fawn examples have the Richmond handle



/42 Underglaze blue



/2 Fawn

13490/39

Here is the last color –
teal which Shelley
called Green



The story behind this discovery is that Betty and Ray Robinson in Australia recently wrote an article for their newsletter which showed the plate from this trio. I wrote to them to ask if they would share a photo for this talk, and they most graciously agreed.

I am so happy to know it exists and now I can search for one to call my own.

Comparison between Ripon and Gainsborough Saucers of 13490 and 13498



13490 Ripon



13498 Gainsborough

- Note the different shape of the latticework on Ripon compared with Gainsborough
- Gold scrollwork is different
- Ripon does not have gold dots on the patches

13490/41 Maroon Tea for Two Set



H PARDOE on cakeplate
and teapot



13570 Patches and Georgian Spray



/39 Green, /41 Hard Kiln Maroon, /42 Underglaze Blue, /4 Apple Green

Does it come in Pink and Fawn also, similar to 13498?



13570

13498

Side by side comparison of 13570 (left) and 13498 (right):
In the area where there is latticework on 13498, 13570 inserts a floral litho
Less goldwork curlicues and no dontil edge on 13570

Montrose 13554

Another Georgian litho pattern



/4 Apple green, /40 Hard kiln pink, /41 Hard kiln maroon, /42 Underglaze blue

13554/41



- *Montrose* was Curt Leiser's favorite pattern
- The only colors seen by the time of his passing were maroon and blue
- Pink and green showed up much more recently and I have only seen one of each
- I own a dinner plate in maroon but look what got away – a complete dinner service in blue



13554/42

Complete dinner service that sold on eBay for around \$800, a bargain for a Shelley dinner set in any pattern
(Please excuse the poor picture quality)

H PARDOE APPEARS AGAIN



H Pardoe appears in the lower left of the center of the cup in the maroon and green examples I have, but not on the pink and blue ones

13556 *Georgian* litho with maroon



This pattern uses the *Gold Jungle* print all over the maroon ground, giving it a chintz-like appearance. It was made in Gainsborough and Ripon.



Also in black as 13556/24

13568/41 Tea set



13568 uses the *Georgian* litho



13568 Mocha shape



13568 cakeplate with H. Pardoe
pseudo signature



13499 Panel & Rose and Red Daisy



4 colors: Blue, Green,
Maroon and Pink

Gainsborough shape

Does it come in Fawn
and Green (like Teal)?
Probably



13499 Henley
Comes in all six colors



13499 Mocha in /4 Green

Note: center litho is Georgian, not
Rose and Red Daisy

H Pardoe's signature in lower left of
floral spray



Cakeplate, PN unknown, probably 13499

13485 *Patches and Rose & Red Daisy*



On Ely shape, /2 Fawn, /39 Green (Teal), /40 Pink



/41 on Mocha



/42 Blue



/4 Apple Green

13485 also comes in Gainsborough
Alas, I don't have a single one



13517 Panels and Primrose



/4 Apple green, /39 Green
(looks like Teal), /42 Blue,
/41 Maroon above

Produced in Gainsborough
and Mocha

Are there Pink and Fawn
out there?

13571 *Patches and Blossom Sprays*



- Five colors have been spotted: /4 Apple green, /40 Pink, /41 Maroon, /42 Blue, and /39 Green (like Teal)
- Is there a /2 Fawn out there?
- Made in Gainsborough and Mocha shapes
- Solid gold handle and foot

13572 *Patches and Rose Spray* on Ripon



/4 Apple Green, /39 Green (like Teal)



/42 Underglaze Blue

Ripon shape only
Was it also made in Fawn and Pink?



/41 Hard Kiln Maroon

13555 Panels and Rose Spray

Made in Gainsborough,
Chester, Mocha and
dinnerware

Has only been seen in /41
Maroon and /42 Blue



Note the pale blue
background for the lattice
and scroll work on /42 Blue

13555/42 was on display in Shelley showroom



This is a still photo taken from the Shelley movie made c. 1947, later narrated by Ray Reynolds

Princess



14024 Maroon



14026 Blue



14025 Green

- Produced on the Richmond and Gainsborough shapes
- Gainsborough is less common
- Used *Dubarry* panels and *Chantilly* floral litho



14027 Maroon



14028 Green

Empress

- Produced on the Richmond and Mocha shapes as 14027-14029
- Used *Duchess* panels and *Georgian* floral sprays
- Also produced as Seconds ware PN 2515 Blue and PN 2533 Green on Gainsborough and Richmond shapes

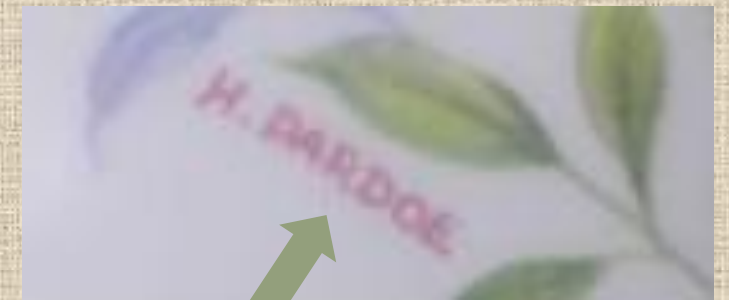


14029 Blue



14029 on Mocha

14028 *Green Empress* Coffee Set



H Pardoe signature on
center litho of coffee pot



14185 Maroon Carlisle coffee pot

Viscount

- Made in Bestware as 14185 Maroon and 14186 Blue on the Carlisle shape
- Also made in Seconds ware as 2518 Maroon on Gainsborough
- The splash of color was neither Patches nor Panels but rather a butterfly shape
- Also made in dinnerware



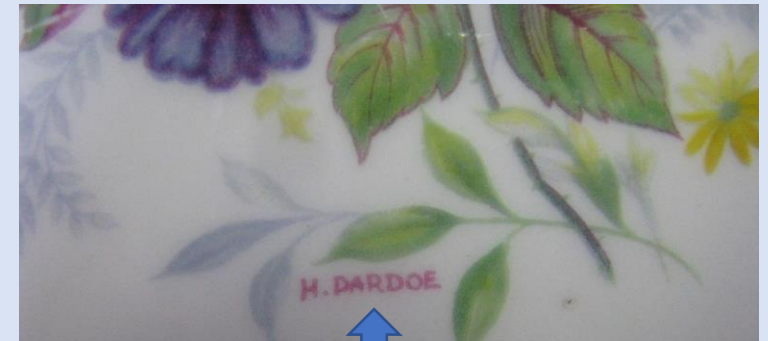
2518 dinner plate



14186 Blue on Carlisle



2518 on Gainsborough

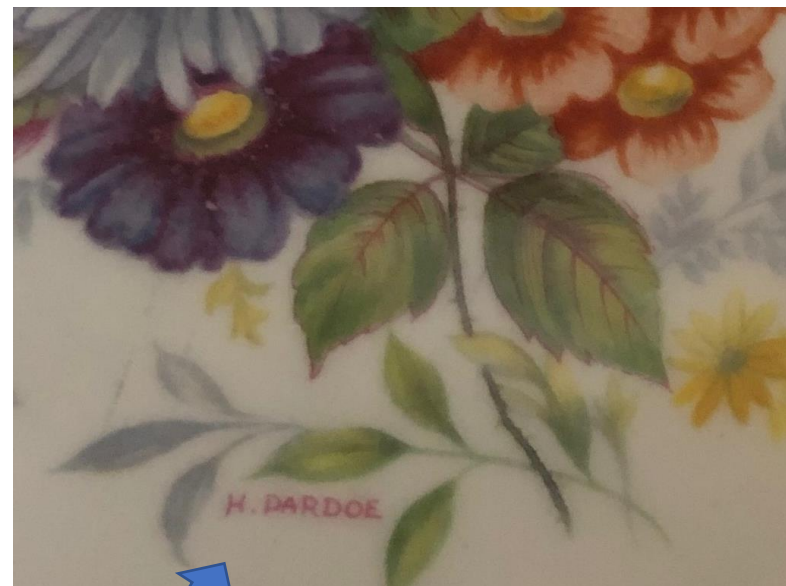


H. Pardoe pseudo signature on
2518 dinner plate

H Pardoe shows up again



14186 *Blue Viscount* Cake plate



Closeup of center with H.
Pardoe pseudo signature

Dubarry and Georgian Litho 2534-2536



2534 Green

- Seconds ware
- *Dubarry* panels and *Georgian lithos*
- Gainsborough shape



2535 Blue



2536 Maroon

13674 Dessert Set



Chantilly litho

Pattern book says centers
handpainted by A. Taylor



Centers of my dessert set have
H. Pardoe pseudo signature



An entire set of 13674 was featured on a long shelf in
the Shelley showroom



Paintress in factory painting a dinner plate
in 13674

Unnumbered Shelley cup and saucer

Handpainted by A. Taylor

Chris Davenport reports:

- He has never seen the wave-like panel shape on any other Shelley piece
- It is genuine Shelley, handpainted by A. Taylor
- It is a one-off – unique in all the world





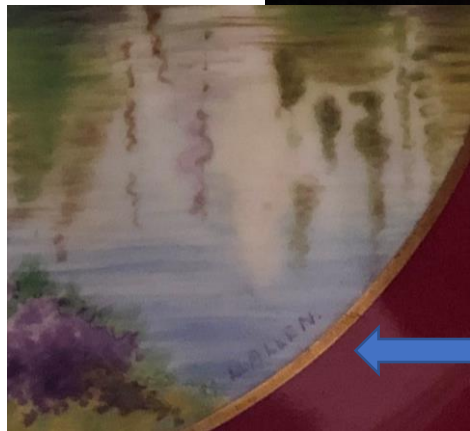
A. Taylor's signature on cup above
and saucer right



Another A. Taylor Gem



Buckingham Palace plates PN 13118



Louise Allen signature



A. Taylor signature

A. Taylor Painted for Several Staffordshire Potteries



A. Taylor's signature

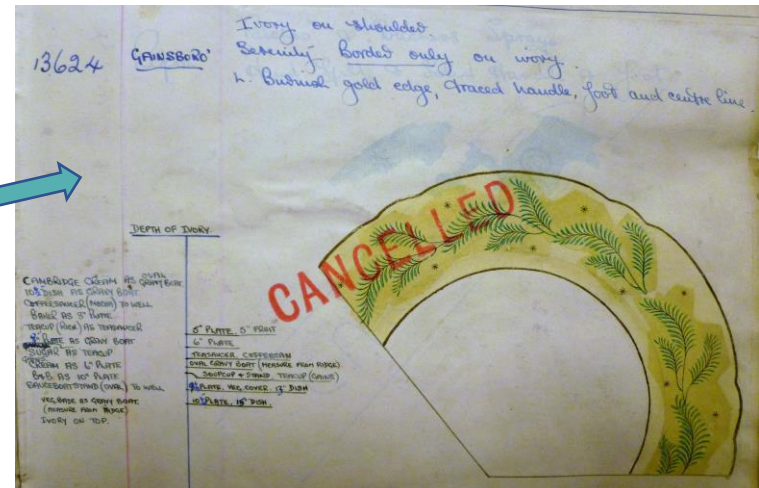
Cup and Saucer for Elijah Brain Foley China

A Shelley Mystery



NOT 13624

- All three cups/saucers have PN 13624 on the bottom
- The floral litho is *Duchess*
- The design within the cutouts is fish scale, seldom seen on other Shelley patterns
- The pattern book lists 13624 as *Serenity*
- What are these cups and saucers? Chris Davenport does not know





Unnumbered



Numbered 13624/39 but incorrect

- On the left is a similar cup and saucer with no pattern number
- It matches the one numbered 13624 (right)
- Except the gold dontil edge, gold scrollwork and the fish scales have been left off
- Is it an unfinished piece or a different pattern?

Another mystery



- Another unnumbered cup and saucer with Shelley backstamps on cup and saucer under the glaze
- The floral litho is *Chantilly*
- “A” below “England” indicates it was manufactured in 1962-63

Mystery saucer



Pattern 13192



- Compare the panel portion of the mystery saucer (left) with the saucer for PN 13192 (right).
- They are the same except for the background color.

PN 13193 c. 1940

- Pink panels are the same as Chantilly mystery cup and saucer
- /34 ground color is a paler pink than Chantilly mystery cup which is probably /40 Hard Kiln Pink
- Different floral treatment – 13193 floral sprays are handpainted
- Mystery Chantilly c/s has floral spray in center rather than gold print
- The mystery Chantilly c/s may be a newer version of 13193 or perhaps a prototype of a possible new pattern using elements from the old



One Final Mystery Solved by Chris Davenport



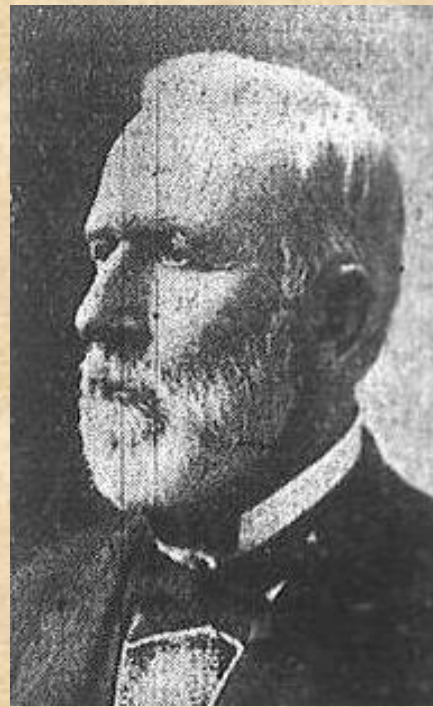
Unnumbered cup and saucer by Shelley



View of saucer and inside cup



- Backstamp on cup says “Manufactured for T.M. James & Sons”
- T.M. James and Sons was a high-end retail store in Kansas City, MO selling fine china including Shelley



T. M. JAMES,
Direct Importer and Jobber of
Crockery and China,
GLASSWARE AND TABLE CUTLERY.
ROGER BROTHERS'
Plated Spoons, Knives and Forks,
PLATED CASTORS AND BRITANNIA WARE.

White and Gold Band China in Dinner, Tea and Toilet Sets. Also Lamps, Lanterns and Chandeliers.

**632 Main St., North of Seventh,
KANSAS CITY, MO.**



T.M. James Retail store in
Kansas City

13548 in Maroon on Ripon



TM James cup & saucer



- Note how the gold flowers on the outside of the 13548 Ripon cup and the blue flowers on the TM James cup are the same
- Also note the similarity of the shapes of the panels and latticework of the two saucers

13499

TM James



- Cup comparison of PN 13499 (on left) with mystery cup (on right)
- The blue panels and the gold are similar.
- Differences include the center motif TM James cup, the floral litho placed on top of the latticework, and no dontil edge on the TM James cup

TM James

13629 *Basket Festoon*



The scrollwork on the TM James saucer appears to have been placed on top of the *Basket Festoon* litho.

Scrollwork similar to 13555/42



Chris Davenport's conclusions:

- This cup and saucer were a prototype made by Shelley for approval by T.M. James and Sons
- 2 or 3 would have been made – one or two for the customer and one for Shelley to keep as reference
- While not a match, the cup and saucer were meant to go together and were handpainted. A litho would not have been made until approval by the customer and production was started
- No doubt a representative from T.M. James visited the factory and may have been escorted by Ray Reynolds



Thanks to Chris Davenport for assistance and photographs, and numerous other Shelley collectors: Curt Leiser, Lynn Smith, Ruth Friedman, Kay Hinderliter, Mildred Patterson and Betty and Ray Robinson

References

Davenport, Chris, *Shelley Pottery The Later Years*, Heather Publications Ltd., Congleton, Cheshire, UK: 1997.

Hill, Susan, *The Shelley Style*, Jazz Publications Ltd., Stratford Upon Avon, Warwickshire, UK: 1990.

John, W.D., *Nantgarw Porcelain*, R.H. Johns Ltd., Newport, Mon, England: 1948.

Knight, Richard and Susan Hill, *Wileman*, Jazz Publications Ltd., Stratford Upon Avon, Warwickshire, UK: 1995.

NSCC Magazine, "Elegance of the Elegants", by Curt Leiser, Spring 1996, Vol. 7, Issue 1; "Shelley's Elegant Evolution" by Curt and Lynne Leiser, Summer 2002, Vol. 13, Issue 2.

The Shelley Group Magazine, "Nantgarw Porcelain: Its Impact on Eric Slater and Shelley China", by Chris Davenport and Carolyn Keating, No. 123, June 2017.

All pattern book images have been reproduced with kind permission of WWRD, United Kingdom, Ltd., and the City Archive, Stoke-on-Trent.



Nantgarw



Shelley